

RETINA 360 WORKBOOK



IN FOCUS: DIABETIC EYE DISEASE CLINICAL PEARLS

Challenges of Managing Diabetic Eye Disease

FACULTY



Hong-Uyen Hua, MD

Assistant Professor of Clinical of Ophthalmology
Bascom Palmer Eye Institute
University of Miami
Miami, FL



Tavish Nanda, MD

Retina Consultants PC
Hartford, CT

This activity is supported by an independent educational grant from Regeneron.

Challenges of Managing Diabetic Eye Disease

Hong-Uyen Hua, MD, and Tavish Nanda, MD

Watch Now: <https://evolvemed.com/segment/29863/>

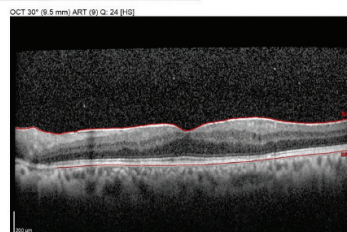
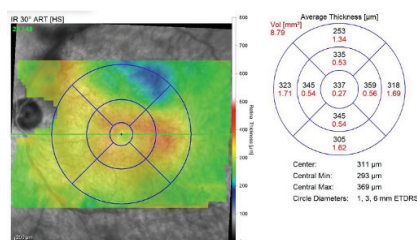
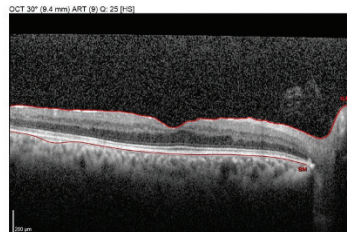
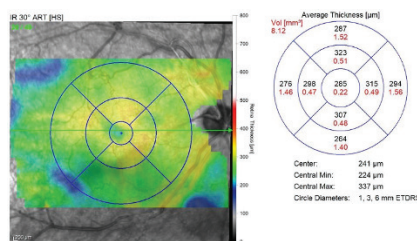
CASE HIGHLIGHTS

- Drs. Hua and Nanda discuss the challenges of managing diabetic eye disease, including the need for accelerating care and durability of care as well as the barriers of access, timely referral, and patient compliance.
- They also cover strategies for managing patient expectations, starting with second-generation agents when possible, and balancing anti-VEGF injections and laser treatments.
- A case is presented of a 36-year-old man with extensive proliferative diabetic retinopathy and diabetic macular edema who showed significant improvement with a combination of anti-VEGF injections and panretinal photocoagulation.
- Drs. Hua and Nanda emphasize the importance of timely intervention and regular follow-up for these high-risk patients.

NOTES

“Given the challenges with diabetics, we need to place our best foot forward as retina specialists. So this may mean starting with second-generation agents when we can and when we're not limited by pay or step therapy.”

HONG-UYEN HUA, MD



VIDEO CASE:
FINAL OCT OF
PATIENT MORE
THAN 5 YEARS
AFTER
REFERRAL.