

RETINA 360 WORKBOOK



IN FOCUS: nAMD CLINICAL PEARLS

Fluid Tolerance: Clinical Trials vs Real World

FACULTY



Samuel Minaker, MD
Rush University Medical Center
Illinois Retina Associates
Chicago, IL



Jayanth Sridhar, MD
Chief of Ophthalmology
Olive View Medical Center
Los Angeles, CA

This activity is supported by an independent educational grant from Regeneron.

Fluid Tolerance: Clinical Trials vs Real World

Samuel Minaker, MD, and Jayanth Sridhar, MD

Watch Now: <https://evolvemeded.com/segment/29879/>

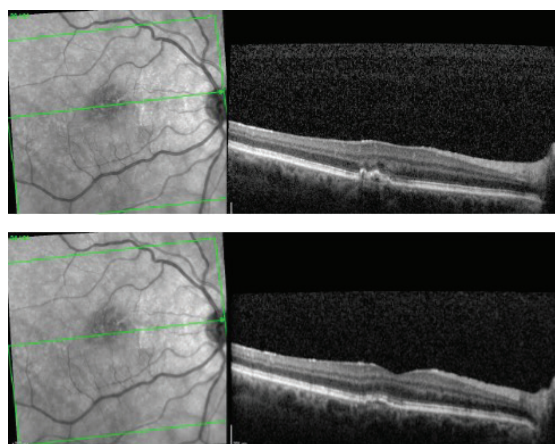
CASE HIGHLIGHTS

- Many clinicians prefer to use a loading dose regimen of three monthly injections of high-dose aflibercept to start.
- After the loading doses, clinicians are generally comfortable extending the treatment interval to 7 to 8 weeks, per the drug label, though some may extend more slowly (eg, 2 weeks at a time) based on individual patient factors.
- There is interest in more aggressive extension of treatment intervals with second-generation anti-VEGF agents, though clinicians remain cautious about tolerating any recurrent fluid. Home monitoring technologies may help enable longer treatment intervals in the future.
- Overall, the discussion highlighted the evolving treatment approaches with high-dose aflibercept and other newer anti-VEGF therapies for neovascular age-related macular degeneration, as clinicians seek to balance durability, fluid tolerance, and patient convenience.

NOTES

"I think we should talk about home monitoring because that would really solve a lot of the uncertainty and insecurity we have with extensions. If you had reliable home monitoring that a patient could conduct daily that would tell you when they recur, I think what we discover is a lot of these patients can extend a lot further than we think."

JAYANTH SRIDHAR, MD



**VIDEO CASE: PATIENT OCT
56 DAYS AFTER THE FIFTH
DOSE OF AFLIBERCEPT 8 MG.**

